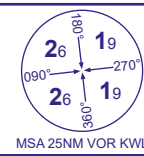
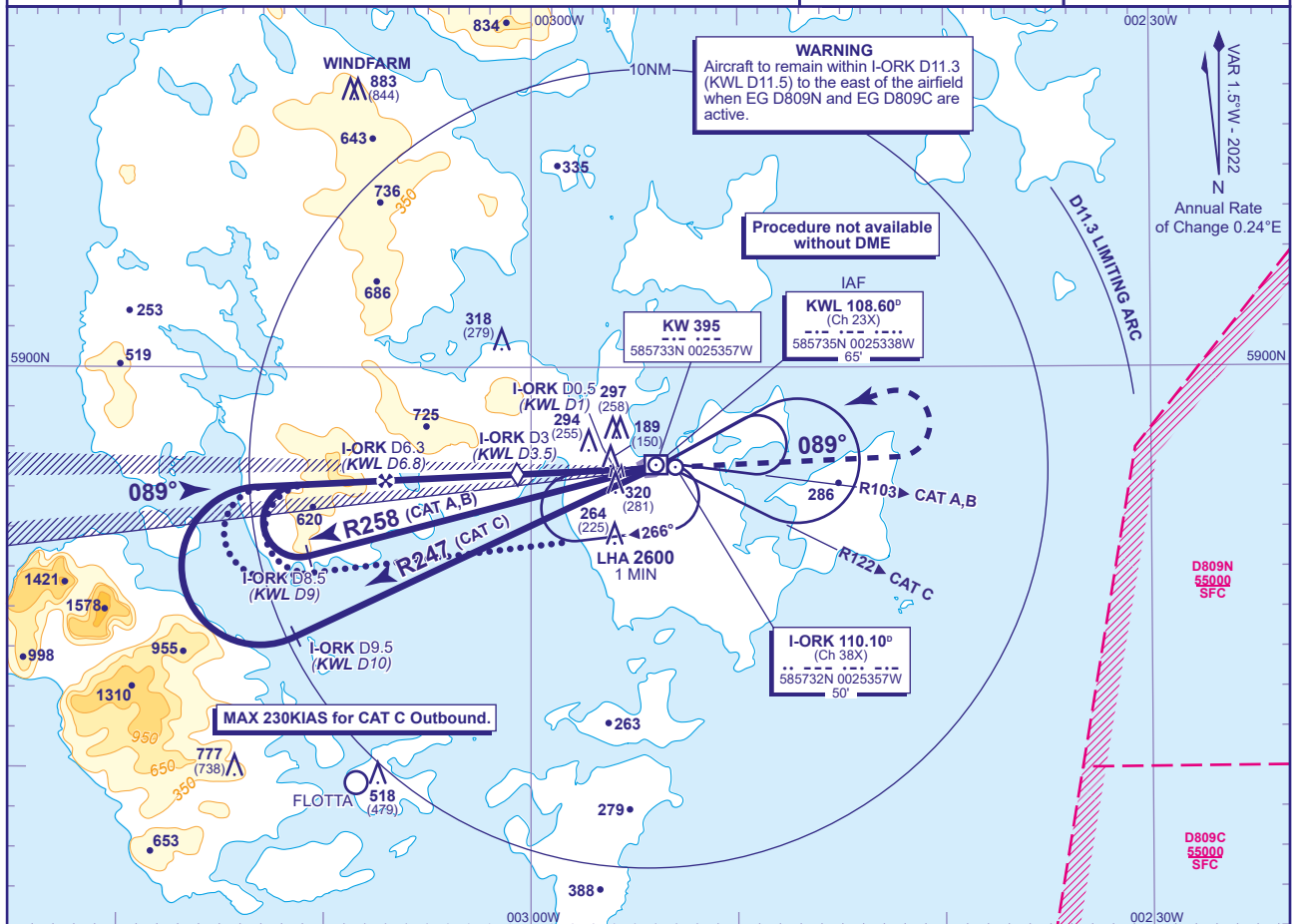


**LOC/DME/VOR**  
**RWY 09**  
(ACFT CAT A,B,C)

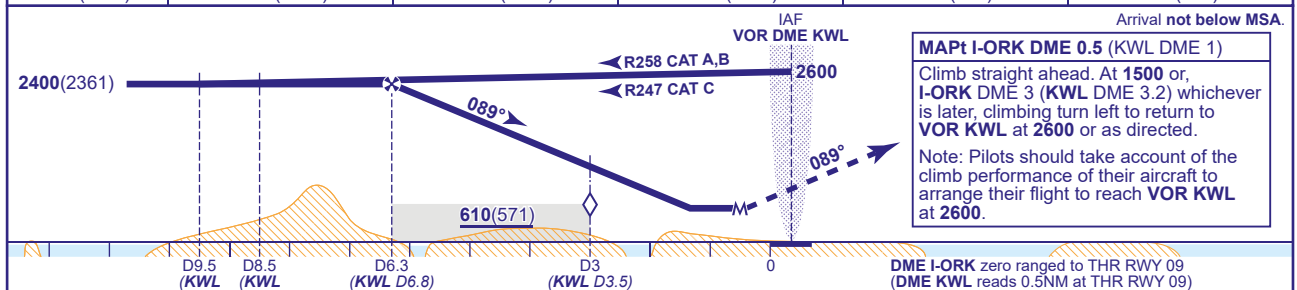


|                     |        |
|---------------------|--------|
| LOC/DME/VOR         | RWY 09 |
| (ACFT CAT A,B,C)    |        |
| TRANSITION ALTITUDE |        |
| 3000                |        |



RECOMMENDED PROFILE Gradient 6.1%, 370FT/NM

|                |            |            |              |          |          |
|----------------|------------|------------|--------------|----------|----------|
| DME I-ORK(KWL) | 5(5.5)     | 4(4.5)     | 3(3.5) (SDF) | 2(2.5)   | 1(1.5)   |
| ALT(HGT)       | 1920(1881) | 1560(1521) | 1190(1151)   | 820(781) | 460(421) |



|                    |                    |          |          |            |                 |        |     |     |     |     |     |
|--------------------|--------------------|----------|----------|------------|-----------------|--------|-----|-----|-----|-----|-----|
| Aircraft Category  |                    | A        | B        | C          | Rate of descent | G/S KT | 160 | 140 | 120 | 100 | 80  |
| OCA (OCH)          | Procedure          | 540(501) | 540(501) | 540(501)   |                 | FT/MIN | 990 | 860 | 740 | 620 | 500 |
| VM(C)OCA (OCH AAL) | Total Area         | 650(592) | 660(602) | 1250(1192) |                 |        |     |     |     |     |     |
|                    | South of RWY 09/27 | 650(592) | 660(602) | 760(702)   |                 |        |     |     |     |     |     |

### ALTERNATIVE PROCEDURE

Arrival **not below MSA**. Overhead VOR/DME KWL (IAF) at **2600** turn to establish on the outbound leg of the holding pattern. Extend the outbound leg of the hold descending to **2400**. At I-ORK DME 8.5 (KWL DME 9) (CAT A,B) or I-ORK DME 9.5 (KWL DME 10) (CAT C) turn right to establish on the localizer; when established continue as for basic procedure.

## ENTRY TO BASE TURN PROCEDURE AFTER HOLDING

If required, the Base Turn procedure may be entered after holding by flying a teardrop reversal manoeuvre from overhead the holding facility after flying inbound in the hold as follows: Fly outbound on track 103°M (CAT A,B) or 122°M (CAT C) for 1 MIN then turn left to return to the overhead to enter the base turn procedure. Lowest altitude to commence procedure from the hold is **2600**.

**NOTE 1** NDB KW may be used in lieu of VOR KWL.

**CHANGE (1/24): ATIS FREQUENCY REVISED**